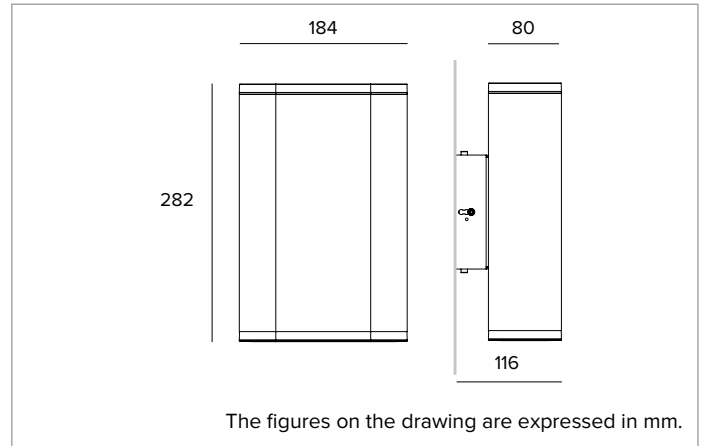


1E2877 | STILO Wall Flat

Wall-mounted LED fixture



| | 4000K | H(m) | D1(m) | D2(m) | E _{max} (lx) | | |
|---------------|-----------------------------|------------------|--------|-------|-----------------------|------|----|
| | Ra80 | 61° | 86° | | | | |
| Fixture Power | 24W | 1 | 1.51 | 1.98 | 1446 | | |
| Source Flux | 3403lm | 2 | 3.01 | 3.96 | 362 | | |
| Fixture Flux | 2460lm | 3 | 4.52 | 5.94 | 161 | | |
| Efficacy | 103lm/W | 4 | 6.02 | 7.91 | 90 | | |
| TS787 | I _{max} =464cd/klm | I _{max} | 1580cd | 5 | 7.53 | 9.89 | 58 |



SOURCE

High efficiency Chip on Board LED.

Energy efficiency class: D

Nominal power: 1x21W

Nominal flux: 3403lm

Colour rendering index: 80

Rf: 82

Rg: 95

CCT nominal: 4000K

SDCM: 2

Lifetime (L80/B10): >50000h tq +25°C

ILLUMINOTECHNICAL CHARACTERISTICS

High luminous efficiency pure aluminium reflector.

Emission: MONO-EMISSION

Optic: ASYM

Optical efficiency: 72%

Fixture flux: 2460lm

Luminous efficacy: 103lm/W

Photobiological safety: Compliant with RG1 low risk group

MECHANICAL CHARACTERISTICS

Anodized and painted extruded aluminium body and anodized and powder coated die-cast aluminium optical unit and terminal. Tempered glass protective screen. Mono-emission version.

Colour and finish: Ferrite

Weight: 3.06Kg

Degree of protection: IP66

Mechanical Resistance: IK09

ELECTRICAL CHARACTERISTICS

Integrated IP68 ON-OFF electronic power supply. Watertight optical unit with an IP68 plug for rapid connection to the driver. Driver box fitted with IP68 watertight connectors driver and pre-cabled with 1m H07RN-F (2x1.5mm²) cable. The driver can be accessed and inspected easily thanks to the plug & light fitted in the fixture. Luminaire compliant with EN 60598-2-22 for power supply from a centralised emergency system CPSS (Central Power Supply System), not incorporated in the luminaire - high risk areas excluded. The default power and flux are 100% in AC and 100% in DC.

Fixture Power: 24W

Power supply: 220-240Vac 50/60Hz

Insulation Class: CLASS 2

Type of driver / Control: ON-OFF

Driver included: YES

Class F: YES

SAFE FLICKER: PstLM=<1 and SVM=<0.4 (IEC TR 61547-1 and IEC TR 63158), to ensure a more comfortable and safe light

Ambient temperature: -25°C / +35°C

INSTALLATION

Parallel wall mounted version. Equipped with an AISI 316 stainless steel installation bracket. The body can be adjusted from +/-4° up to +/-8° vertically and +/-4° horizontally. The fixture can be moved up to 15mm from the mounting surface by sliding the bracket along a special guide.

NOTES

Uses the "Waterblock Plus" technical solution that involves resin coating the connection cables and completely resin coating the integrated driver limiting the risk of humidity reaching the fixture. It is possible to subject the product to Cataphoresis treatment on request. 110-277Vac version available on request.

WARRANTY

5 years.

WARNING

Luminaire designed for disposal/recycling at end-of-life. Non-replaceable light source. Replaceable control gear by a professional.

Due to the technological evolution of the electronic components, the data provided may be updated, and as such, confirmation must be requested during the order process.

Luminous flux and power supply have +/-10% tolerances with respect to the indicated value. tq +25°C (CIE 121).

We reserve the right to make technical changes.

Targetti Sankey S.r.l.
Via Pratese, 164
50145 Firenze - Italy
Tel: +39 055 37911
targetti.com
targetti@targetti.com

CCIAA Firenze
Share Capital:
€ 500.000,00
VAT N. (IT):
01537660480
R.E.A: FI-275656

TARGETTI

1E2877 | STILO Wall Flat
Wall-mounted LED fixture

Accessories

Filter



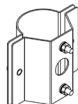
| Filter | Code |
|---------|---------------|
| Red | 1E3035 |
| Green | 1E3036 |
| Blue | 1E3037 |
| Yellow | 1E3038 |
| Magenta | 1E3039 |

Chromatic coloured PMMA filter, anodised powder coated frame (ferrite).
NSP, EFFECT, ASYM, ELLIPTICAL

| Colour | Code |
|--------|---------------|
| | 1E2578 |

Anti-glare.
PMMA holographic filter to reduce the beam angle, CNC machine anodised and powder coated aluminium frame.
To be used with NSP, ASY and ELLIPTICAL optics.

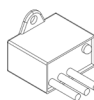
Mounting System



| Colour | Code |
|--------|---------------|
| | 1E2906 |

Pole (Ø60mm) installation bracket.
Powder coated stainless steel.
NSP, ASYM, ELLIPTICAL

Surge protector



| Code |
|--------------|
| A013B |

Surge protector compatible with CLASS II lighting fixtures and electronic drivers.
Operating voltage 220-240Vac.
SPD type 2+3.
Max surge protection 10kV.
CLASS II
IP67

Due to the technological evolution of the electronic components, the data provided may be updated, and as such, confirmation must be requested during the order process.
Luminous flux and power supply have +/-10% tolerances with respect to the indicated value. tq +25°C (CIE 121).

We reserve the right to make technical changes.

Targetti Sankey S.r.l.
Via Pratese, 164
50145 Firenze - Italy
Tel: +39 055 37911
targetti.com
targetti@targetti.com

CCIAA Firenze
Share Capital:
€ 500.000,00
VAT N. (IT):
01537660480
R.E.A: FI-275656

